

# Chilliwack

Chilliwack is an Eastern community with a population of nearly 102,000 people and is approximately 1 hour and 15 minutes from Vancouver.

Chilliwack is an urban core within a rural setting. The area offers outdoor activities surrounded by both mountains and water, such as hiking, fishing, mountain biking, watersports, camping, golfing, and horseback riding. It has year-round recreation, local artisans, waterslides, vineyards, and bistros.

It boasts more affordable housing than areas closer to the city, lower tax rates, and exceptional quality of life. In terms of economy, Chilliwack has a booming retail and services industry, manufacturing industry, and is well known for its highly successful agricultural industry.

Chilliwack General Hospital is a 169-bed facility. There are 149 Family Practitioners in Chilliwack with 18 locums. This position will be a full-time, two-year Return of Service, and the hope is that the physician will familiarize with the community and stay.

## Why choose Chilliwack?

### LOCAL AMENITIES

[Tourism Chilliwack](#)

### DIVISIONS

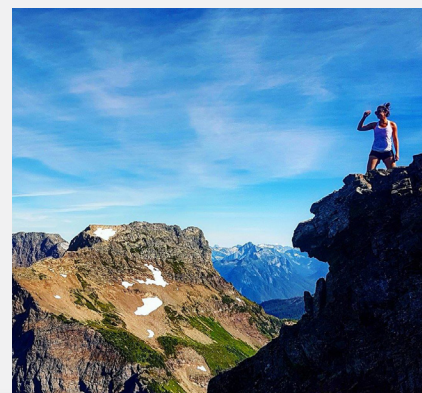
[Divisions BC](#)

### AFFORDABLE HOUSING

[Live Fraser Valley](#)

### EDUCATION & SCHOOLS

[School District 33](#)



LEARN MORE ABOUT CHILLIWACK

## CONTACT US

Elly Meyerink  
Operations Lead  
[elly.meyerink@fraserhealth.ca](mailto:elly.meyerink@fraserhealth.ca)



[medicalstaff.fraserhealth.ca](http://medicalstaff.fraserhealth.ca)

# Mission

Mission is located on the North Shore of the Fraser River in British Columbia. It is nestled on a southern slope overlooking the lush valley.

Mission today is a rapidly growing community that currently has 41,000 residents. It is 15 minutes away from the US Border and about 1 hour and 15 minutes from the city of Vancouver. Mission has beautiful views of the mountains and natural forest with a warm climate in the summer and a mild and wet winter. Flowers are in bloom for most of the year as the area is naturally hospitable to a wide variety of plant life and vegetation and is known to be “the Jewel of the Valley”. Mission is known for BC’s first rail link to the United States and also for the earliest hydroelectric dam, the Powerhouse at Stave Falls. Mission is welcoming to new citizens, businesses, residents, investors and visitors alike.

There are 31 full-time family practice physicians in Mission. Mission Memorial Hospital (MMH) is a 55-bed care facility. The Family Practice Return of Service position will be a member of the Mission Primary Care Network. The successful candidate would be involved in longitudinal primary care and supporting the team at The Residence in Mission (TRIM). It is in anticipation that the physician will establish a full-time practice in the city of Mission.

## Why choose Mission?

### LOCAL AMENITIES

[Mission Tourism](#) | [City of Mission](#)

### AFFORDABLE HOUSING

[Real Estate in Mission](#)

### EDUCATION & SCHOOLS

Public and Private Schools



LEARN MORE ABOUT MISSION

## CONTACT US

Jen Cook

[jcook@missiondivision.ca](mailto:jcook@missiondivision.ca)

Mission Division of Family Practice



LIVE &amp; WORK IN

# Surrey & North Delta

As one of Canada's fastest-growing urban centres, Surrey-North Delta offers the advantages of a forward-thinking, diverse, and thriving city alongside welcoming, vibrant, and sustainable communities.

Welcome to Surrey-North Delta.  
Your colleagues, your patients and  
your best life awaits!

With BC's largest school district, world-famous festivals, and the natural beauty of the Coast Mountains and the Pacific Ocean, Surrey-North Delta is family-friendly westcoast living at its finest.

Opportunities for Family Physicians in Surrey-North Delta abound. Explore different areas of interest, work with diverse patient populations, and build the practice of your dreams. Different payment models are available to suit your practice style and preferences and Surrey-North Delta's Primary Care Network provides local, extended primary care services for your patients.

## Why choose Surrey-North Delta?

### FEATURED HEALTH SERVICES

[Surrey Memorial Hospital](#) | [Jim Pattison Centre](#) | [Primary Care Networks](#)

**New hospital and medical school coming soon!**

### COMMUNITIES

[City of Surrey](#) | [City of Delta](#)

### EDUCATION & SCHOOLS

[Surrey Schools](#) | [Delta Schools](#)

[Simon Fraser University Surrey](#) | [Kwantlan Polytechnic University](#)



LEARN MORE ABOUT SURREY

LEARN MORE ABOUT DELTA

## CONTACT US

Megan Shymanski  
Recruitment, Retention and Wellness  
[megan.shymanski@snddivision.ca](mailto:megan.shymanski@snddivision.ca)  
604-499-3474



[medicalstaff.fraserhealth.ca](http://medicalstaff.fraserhealth.ca)