

Burnaby

Burnaby is a central city located in Metro Vancouver, and between the Fraser River and Burrard Inlet.

Burnaby is the third largest city in the province with over 250,000 residents, and is known for its beautiful surrounding natural environment and diverse culture, making it a sought out place to live, work and play. Burnaby is also a thriving urban centre known for its public transit system, great shopping and restaurants, and is a family-friendly community. There are amazing parks and indoor and outdoor recreation spots. It has history, culture and community, and great schools to offer.

There are 254 full-time family practice physicians in Burnaby. Burnaby Hospital (BH) is a 286 bed hospital offering medical, surgical, obstetric, tertiary palliative care, psychiatry, critical care, as well as 24/7 emergency care.

The Return of Service Family Practice position requires long-term care participation. The successful candidate would have an interest in longitudinal care and would participate in neighbourhood networks at the Burnaby's Primary Care Network. It is anticipated that the physician will establish a full-time practice in the city of Burnaby.

Why choose Burnaby?

LOCAL AMENITIES

[Tourism Burnaby](#) | [City of Burnaby](#)

AFFORDABLE HOUSING

[Burnaby Real Estate](#)

EDUCATION & SCHOOLS

Offers public and renowned private schools, BCIT, and SFU



LEARN MORE ABOUT BURNABY

CONTACT US

Robbie Lacuna
rlacuna@burnabydivision.ca

Chilliwack

Chilliwack is an Eastern community with a population of nearly 102,000 people and is approximately 1 hour and 15 minutes from Vancouver.

Chilliwack is an urban core within a rural setting. The area offers outdoor activities surrounded by both mountains and water, such as hiking, fishing, mountain biking, watersports, camping, golfing, and horseback riding. It has year-round recreation, local artisans, waterslides, vineyards, and bistros.

It boasts more affordable housing than areas closer to the city, lower tax rates, and exceptional quality of life. In terms of economy, Chilliwack has a booming retail and services industry, manufacturing industry, and is well known for its highly successful agricultural industry.

Chilliwack General Hospital is a 169-bed facility. There are 149 Family Practitioners in Chilliwack with 18 locums. This position will be a full-time, two-year Return of Service, and the hope is that the physician will familiarize with the community and stay.

Why choose Chilliwack?

LOCAL AMENITIES

[Tourism Chilliwack](#)

DIVISIONS

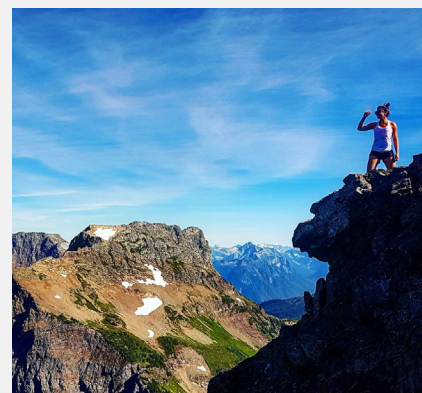
[Divisions BC](#)

AFFORDABLE HOUSING

[Live Fraser Valley](#)

EDUCATION & SCHOOLS

[School District 33](#)



LEARN MORE ABOUT CHILLIWACK

CONTACT US

Elly Meyerink
Operations Lead
elly.meyerink@fraserhealth.ca



medicalstaff.fraserhealth.ca

Fraser Northwest

Explore what the Fraser Northwest Communities of New Westminister, Coquitlam, Port Coquitlam, Port Moody, Belcarra and Anmore have to offer! Each with their own unique features, there is a fit for everyone.

NEW WESTMINSTER

Nicknamed the Royal City since it was named by Queen Victoria in 1859, New Westminister has many vibrant and beautiful neighbourhoods. It is a city of diversity located perfectly in the centre of Greater Vancouver, only 20 minutes by Skytrain or car to Vancouver, and a quick commute to neighbours Burnaby, Coquitlam, and Surrey. Royal Columbian Hospital is located in New Westminister.

PORT COQUITLAM

From its beginnings as a small agricultural town on the Canadian Pacific rail line, Port Coquitlam has grown to a present size of over 58,000 residents. Port Coquitlam, known as “the city of rivers and mountains”, is a thriving community between the Pitt and Coquitlam Rivers. Anchored by its original 1913 city hall, the plaza offers an interesting range of shops, restaurants, cafes, and craft stores. While the Colony Farm Regional Park’s lowland marsh provides sanctuary to birds and wildlife, the Poco Trail’s 24-kilometres (14.9-miles) is popular with both walkers and bike riders. Coquitlam is the sixth-largest city in the province with a population of nearly 140,000 in 2016. The city is always buzzing with activities and is home to Canada’s largest functional fitness event, CanWest Games.

PORT MOODY

From green spaces and art-infused places, to Rocky Point Pier and locally-brewed beer, Port Moody offers urban appeal with a friendly, small-town feel. At the centre of Port Moody, an easy 30 minutes by car from downtown Vancouver, is a compact business district; where you’ll find a variety of quaint shops and places to grab a bite to eat. Nearby Rocky Point Park is a popular spot with shoreline trails to stroll. The city’s railway heritage is celebrated in an annual festival and a heritage railway station survives as a museum. The surrounding area offers a variety of outdoor recreation opportunities, such as Belcarra Regional Park—home to great beaches, hiking trails, picnic areas and a host of water activities.

ANMORE & BELCARRA

The name says it all—Belcarra, a combination of the ancient Gaelic words ‘bal’ and ‘carra’ meaning sun and rock. Belcarra is a secluded seaside neighbourhood situated on the north side of Port Moody, sporting many large custom-designed contemporary homes, including some on acreages with remarkable views of Bedwell Bay and Indian Arm. The exclusive Belcarra neighbourhood is named after Belcarra Regional Park, a 1,100-hectare regional escape, where locals and visitors take in this waterfront playground featuring hiking trails, picnic areas, canoe and kayak rentals and pier. On the upper northwest side of Port Moody is the Village of Anmore, a municipality of just over 1,700 people, incorporated in 1987. It is a nature lover’s paradise and home to two parks, Belcarra Regional Park and Buntzen Lake, an active hydroelectric reservoir that was once Vancouver’s main electricity source.

WHY CHOOSE THE FRASER NORTHWEST

The Fraser Northwest Division encompasses family physicians in Anmore, Belcarra, Coquitlam, New Westminister, Port Coquitlam, and Port Moody. We represent the traditional catchment area of the Royal Columbian and Eagle Ridge Hospitals. Together, members work to improve patient access to local primary care, increase local physicians’ influence on health care delivery and policy, and provide professional support for physicians. The Family Practice Division is a great support and advocate for their members, focusing on making things better and making real change for the physicans.

CONTACT US

Trin Gonzalez Castillo
Trin.gonzalezcastillo@fnwdivisionca



LIVE & WORK IN

Surrey & North Delta

As one of Canada's fastest-growing urban centres, Surrey-North Delta offers the advantages of a forward-thinking, diverse, and thriving city alongside welcoming, vibrant, and sustainable communities.

Welcome to Surrey-North Delta. Your colleagues, your patients and your best life awaits!

With BC's largest school district, world-famous festivals, and the natural beauty of the Coast Mountains and the Pacific Ocean, Surrey-North Delta is family-friendly westcoast living at its finest.

Opportunities for Family Physicians in Surrey-North Delta abound. Explore different areas of interest, work with diverse patient populations, and build the practice of your dreams. Different payment models are available to suit your practice style and preferences and Surrey-North Delta's Primary Care Network provides local, extended primary care services for your patients.

Why choose Surrey-North Delta?

FEATURED HEALTH SERVICES

[Surrey Memorial Hospital](#) | [Jim Pattison Centre](#) | [Primary Care Networks](#)

New hospital and medical school coming soon!

COMMUNITIES

[City of Surrey](#) | [City of Delta](#)

EDUCATION & SCHOOLS

[Surrey Schools](#) | [Delta Schools](#)

[Simon Fraser University Surrey](#) | [Kwantlan Polytechnic University](#)



LEARN MORE ABOUT SURREY

LEARN MORE ABOUT DELTA

CONTACT US

Megan Shymanski
Recruitment, Retention and Wellness
megan.shymanski@snddivision.ca
604-499-3474

